

# HiPerformance Builders



## THE OAKDALE

■ Total Finished Area – 1,248 Sq. Ft.

TRADITIONAL ELEVATION  
Shown with optional exterior features.

*The Mainstreet  
Collection*

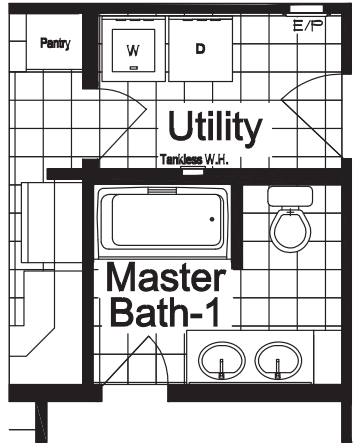
These are artist renderings for sales purposes only.  
Refer to working drawings for actual dimensions.  
© 2010 Nationwide Homes 4/6/10

**NATIONWIDE**  
*Homes*

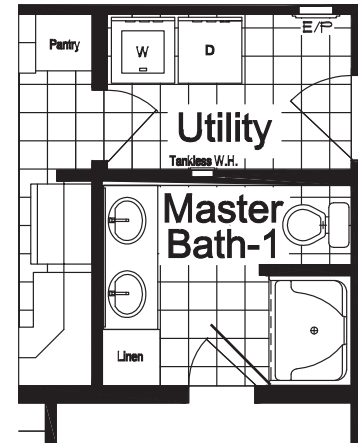
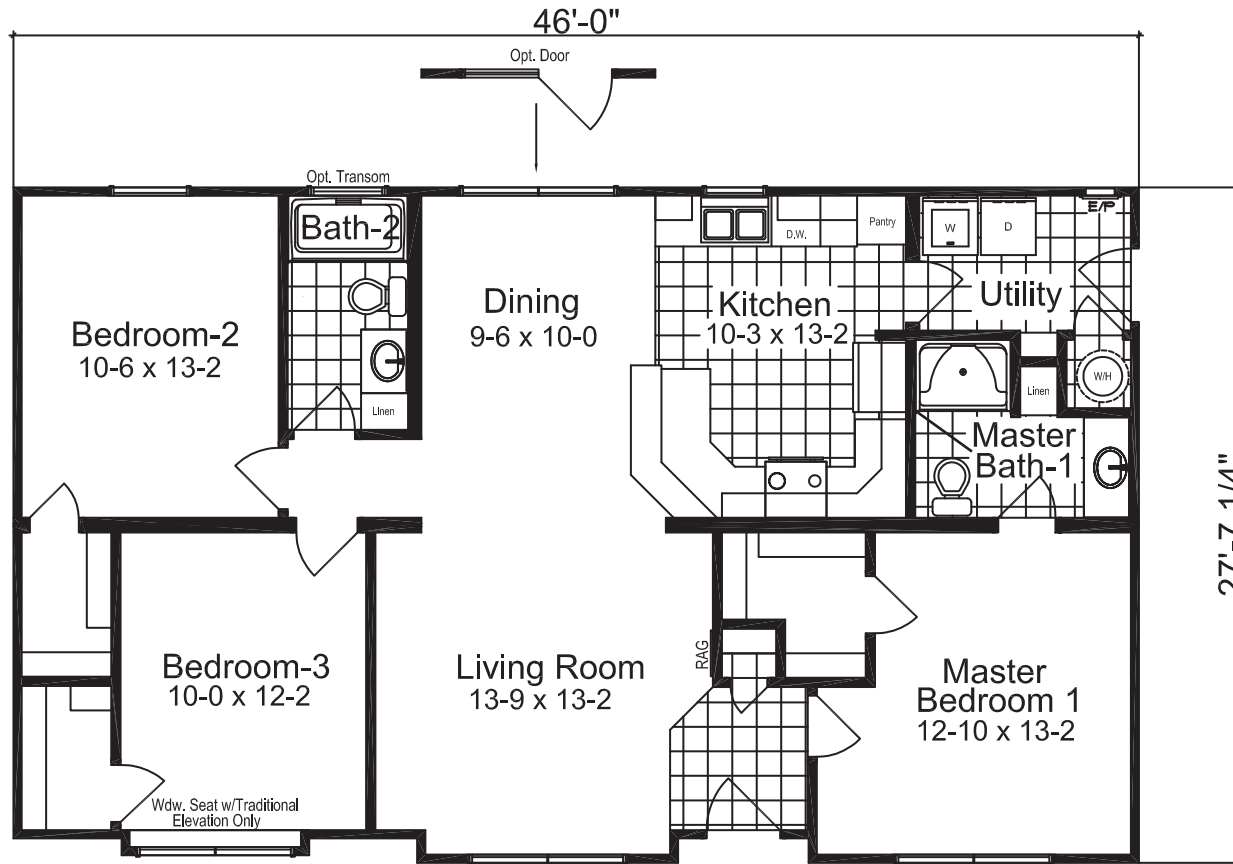
1100 Rives Road • P.O. Box 5511  
Martinsville, Virginia 24115  
Phone: (276) 632-7100  
Fax: (276) 666-2537

[www.nationwide-homes.com](http://www.nationwide-homes.com)

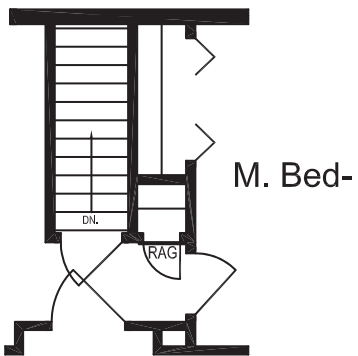
# THE OAKDALE



Opt.#1 Master Bath



Opt.#2 Master Bath



Opt. Basement Plan

Changes to the Mainstreet Collection are not permitted except for published options.