

HiPerformance Builders

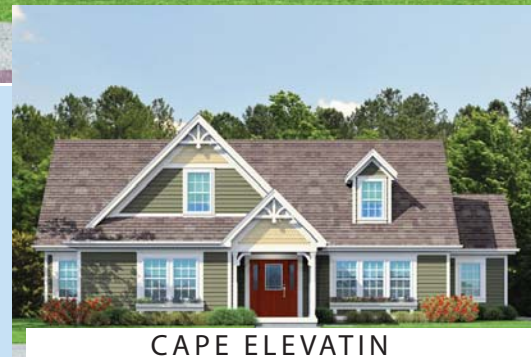


TRADITIONAL ELEVATION

Shown with optional exterior features.

THE LIBERTY

- 1st Floor - 1,824 Sq. Ft.
 - 2nd Floor (Cape) - 1,124 Unfinished Sq. Ft.
- Total Finished Area - 1,824 Sq. Ft.**



CAPE ELEVATION

The Mainstreet Collection

These are artist renditions for sales purposes only.
Refer to working drawings for actual dimensions.
© 2010 Nationwide Homes 4/6/10

NATIONWIDE
Homes

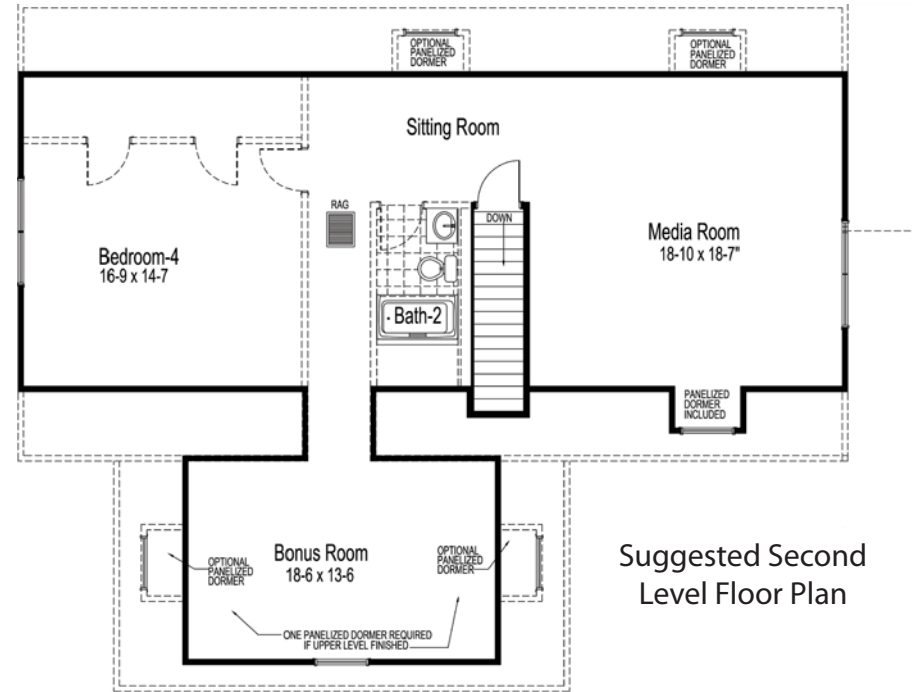
1100 Rives Road • P.O. Box 5511
Martinsville, Virginia 24115
Phone: (276) 632-7100
Fax: (276) 666-2537

www.nationwide-homes.com

THE LIBERTY

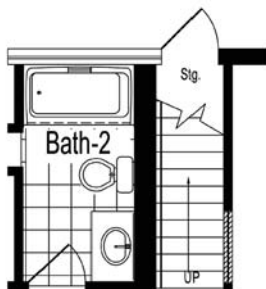


First Level Floor Plan

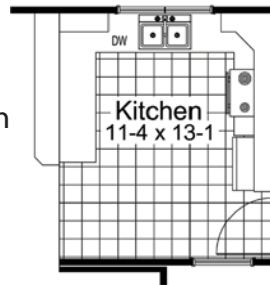


Suggested Second Level Floor Plan

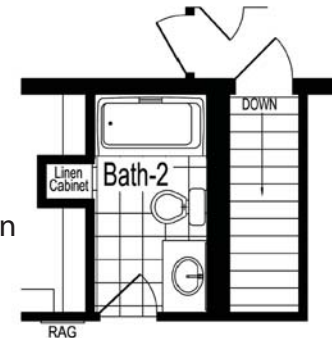
Optional 12/12 Stairs



Alternate Kitchen Plan



Optional Basement Plan



Changes to the Mainstreet Collection are not permitted except for published options.